

---

# THE FLIGHT LINE



## MID-HUDSON RADIO CONTROL SOCIETY

AMA CHARTER #703

**January 2006**

---

PRESIDENT: BOB MAGEE

VOLUME 49, ISSUE 1

---

# HAPPY NEW YEAR

## WHAT'S INSIDE THIS MONTH...

- ▶ Winter Flying Tips
- ▶ E-Zone: Horizon Hobbies Ultra-Stick 40 ARF Review
- ▶ Update on Rich Krebs' DV8R
- ▶ President's Corner
- ▶ 2006 Calendar of Events
- ▶ And lots more...check it out

## JANUARY EVENTS

- |           |  |
|-----------|--|
| <b>6</b>  | Regular Meeting 7:30 PM  |
| <b>14</b> | Winter Fun Fly Hopewell Field<br>10 AM – 2 PM (weather dependent)<br>See email for specifics |
| <b>21</b> | Alternate date, Winter Fun Fly   |
| <b>24</b> | Board Meeting 7:30 PM  |

see full 2006 calendar of events on page 8

## ATTENTION

- ! **Membership renewal deadline extension is January 6, 2006.**
  - Don't forget a copy of your 2006 AMA Membership card.
  - Application form is included on pg 9.
- ! **Don't Forget to I.D. your planes for the 2006 Flying Season!**
  - Please contact Mark Monroe, Membership Director, for new plane I.D. labels. Mark will be at monthly meetings or can be reached via email at [mlmonroe@optonline.net](mailto:mlmonroe@optonline.net)



# Winter Flying Tips



by Ed Perls

There are many nice days in the winter when it's not too cold or windy when you can enjoy flying. I've been doing it for the last ten years on lakes,

open fields, flying sites and enjoying the sunshine and brisk winter air. I'll just drop a few hints that I've found that make it more pleasurable:

## Comfort and Safety

- \* **Wear lots of layered clothing** to stay warm.
- \* **Don't forget sunglasses.** Glare off snow may temporarily blind you.
- \* Bring something warm to drink. Walking in crusty snow can be very tiring and dehydrating.
- \* **Don't go by yourself.**
- \* Bring a shovel, sand, and a cell phone in case you get stuck.
- \* If you are venturing out on a lake, bring a rope at least 50 feet long. The **thickness of ice can be very deceptive.** Springs, that feed lakes, can make the ice very thin and dangerous. Sending your wife ahead in **high-heeled shoes** is an indicator of an unhappy marriage. Instead, follow tracks of ice fisherman when you can and walk in trail. Creaking ice is usually a good sign; it usually means that the ice is expanding. If it gets windy it can mean the ice is breaking up. **If you see the fisherman leaving, it's time to go.** They are more diehard about what they are doing than we are.

## Plane Prep, Transport and FLYING

- \* Before you leave home make sure that your **batteries are charged.** Cold weather reduces the battery charge considerably.
- \* Transport your plane in the warm passenger compartment if possible.
- \* When it comes to starting the engine at near freezing conditions, priming the engine with raw gas can get things started in a hurry, especially if you are hand cranking. You will also find that the engine will run a bit leaner, so **richen up the mixture** a bit.

- \* When it comes to the actual flying, you will find that you have much more flying field to play with. The **cold air really improves the flight performance**, especially the climb and a lowered landing speed.
  - \* I've found the **best time to fly is when the field has about an inch or two of powdery snow.** You don't need it any deeper than that makes retrieval of the models much easier.
  - \* I like to fly with partial gloves so I can feel the sticks and am very careful about not looking into the sun. Your fingers can get cold in a very short time, so **land while you can still feel the sticks.**
  - \* As to **what skis to use**, most commercial brands are quite satisfactory. I use Dubro aluminum skis on my tail- draggers, which weigh five to eight pounds. The skis are 2 1/2" wide and 12" long. The skis are set at a positive angle of 5 to 10 degrees. Shorter skis when flying off ice will improve the turning characteristics.
  - \* When taxiing allow for a greater turning radius.
  - \* When the snow is glazed and there is a wind you will find that the plane will try to weathercock. The lack of friction may make it difficult to stop. Better to kill the engine than have the plane slide into somebody or thing. On days with these conditions it is **better to do touch and goes and save the excitement for the last landing.** The other day, flying out at the field which had a glazed surface, touching down on the first third, I was unable to stop or turn and ended up in the ditch 3 times in a row.
  - \* **Taking off in powdered snow**, keep the tail low to prevent nose-overs. Don't rush things and stall.
  - \* When landing, full stall, tail low, stick back to brake. If you have trouble turning, kill engine and so you don't end up in a ditch like I did.
  - \* **In the air you will notice very little difference in handling from it's wheeled cousins.** Just watch that you don't let the plane get into the bright winter blinding sun.
- Happy Landings, have a nice flight.**

**'E' ZONE**

# Horizon Hobbies Ultra Stick 40 ARF

by Tom Smith

I just finished a Horizon Hobbies Ultra Stick 40 ARF, and test flew it today. I had brought one of my AXI motors down to Florida with me, but it turned out to be too small for this plane. I started looking around and came up with what I think is a new trend in the "E" sector of this hobby.



Horizon Hobbies had come out with a few smaller brushless motors last year, both conventional and outrunner types. They have been well received, and now the line has been expanded. What, you say, another outrunner series. Well, this one is different.

The one I bought was one of two new ones, the E Flite 46 and E Flite 60. Yes, they are using glow motor nomenclature to label their new series of motors. Coming soon are a 25 and a 32 Outrunner too. I bought the 46, theoretically an equivalent of a glow 46, and installed it in the Ultra Stick 40.

It comes with a prop mount and a rear motor mount to set it up in front of the firewall. Nice feature. The quality seems to be very good, and the power on a 5s LiPo is awesome. I had to prop it down to an 11 x 6 to keep the wings on. They recommend a 13 x 8. Way too much, for this model anyway.

The maiden flight went without a hitch in a steady 10 mph wind. Florida 'ya know. No trim changes were needed, damn I'm good, and I flew for about 8 minutes with aerobatics thrown in towards the end. It loops and rolls with ease and I never opened it up to full throttle. It just isn't necessary. Takeoff was at 2/3 throttle, and it was airborne in 50 feet.

I just charged the 5s 4200 mah LiPo pack, and it took 1400 ma. I barely scratched the surface of that pack, and it was slightly warm to the touch after landing. This is a good thing. I should be able to get 20 minutes straight on that pack at this rate.

I think Horizon Hobbies has a hit on their hands, and the motors, considering they come with a prop adapter, spinner and motor mount, are very reasonably priced, and produce loads of power for sport flying. This "new" old concept (Astro tried it years ago) just might catch on, and help guys who want to convert a 25, 40 or 60 size glow model to clean, quiet, efficient, electric flight.



# **She's Almost Done: Update On Rich Krebs' DV8R**

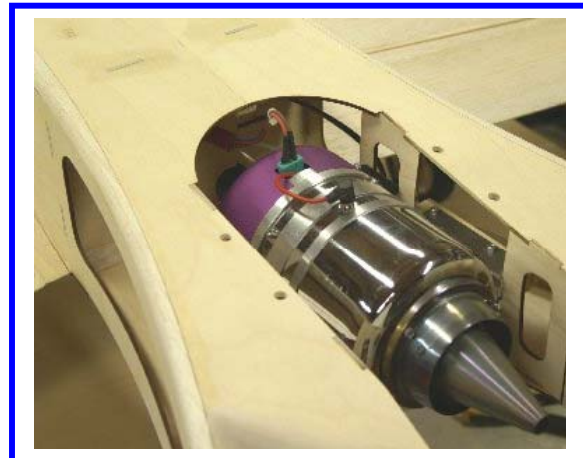
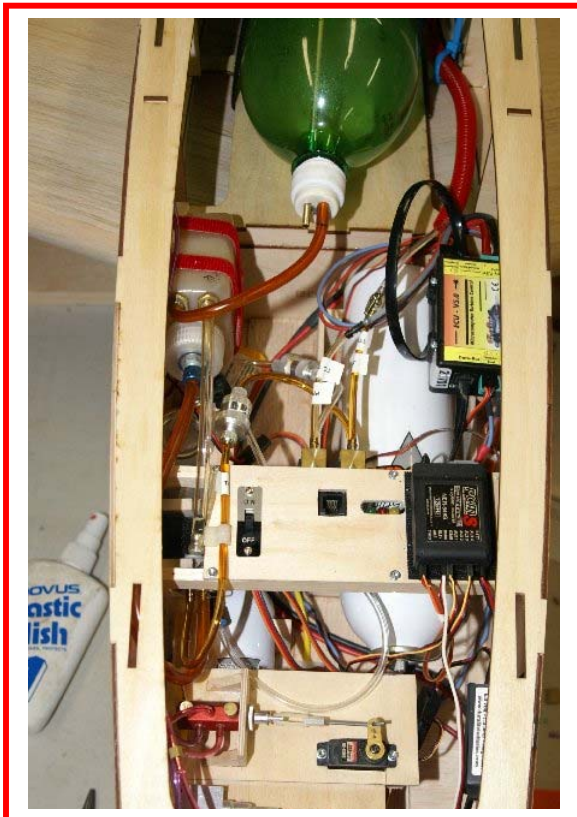
Rich, a former member of MHRCS who moved to Georgia, sent the club an update on his DV8R, here it is ...

December 06, 2005

Hi All,

Just a quick note and pictures of the DV8R - She's almost done! Next is elevator and rudder connections and wiring. I finished the flight systems install yesterday and then ran the turbine in the plane. It went well with no problems. Everything is on schedule for a December first flight. I'll let you know how things progress from here.

See Ya, Rich



**Stay tuned for first flight report**



# PRESIDENT'S CORNER

The Mid Hudson R/C Society is finishing what I believe was one of its most successful years in its history.....!!.

We have a world class flying facility and we will be able to use that facility for at least another year, if not two, three or four more years. We have an excellent backup field at the Aerodrome and we have made significant inroads into securing a State or County owned flying facility. We have sufficient financial resource and have made a giant stride towards getting the club's day-to-day and newsletter communications via the Internet. We have more members attending regional contests and events than ever before and we continue to grow and expand our World Class Rhinebeck Jamboree event in the fall. We have an excellent Flight Training program and an extremely active retiree program. We participate and support youth activities in the form of the Science Olympiad. We have learned how to co-exist with all segments of the sport. Heli's, Power, Electric and Sailplanes all sharing the same facility is a feat that few organizations have been able to master. We have done it and are a model for others to follow. All of this is possible because of the class and character of the membership. MHRCS members are the elite of the modeling community. I want to thank each one of you for the opportunity to work with you in steering this organization towards the goals you want to reach. I hope you feel the same pride I do in being a member of such a strong and productive organization.

With all of these accomplishments and accolades, one could ask why this club is not an AMA Gold Leader Club. The answer is probably because we have not taken the time to fill out the application to be considered for Gold Leader status. I will take that on as a challenge for 2006 so that the organization gets the National recognition you deserve.

I welcome the new members of the Board of Directors for 2006. We have several members of the next generation of leadership active in the persons of Bob Allen, Vice President and Whitney

Philbrick, as Treasurer. Thanks guys for stepping forward. I assure you, you will be given all the help and support you need from the "old" cadre. We need to encourage more of the younger folks to become involved but this is certainly a start. The Directors at Large are finally balanced in my opinion. We have a director representing each of the major disciplines of the hobby. Dick Kalbfus Electric and Sailplanes: Jim Wood power and Norm Coard Heli's.

The club calendar for 2006 will be published as a separate article in this issue of the newsletter. There are planned activities for just about every month of the year.

January starts off with the possibility of two indoor fun flys at the Dutchess community College Gym. Jesse Aronstein is working hard to secure the facility on extremely short notice. The dates listed are tentative. They unfortunately are not weekend dates but it is the best that could be done in the short haul. When Jesse obtains all the clearance necessary, we will publish the details on the Internet. For questions, contact Jesse or Lloyd Quick. There will be indoor r/c demos, indoor rubber and general sport flying of indoor electric R/C including 3-D and Heli's. Should be a good time. Assuming we get the go ahead, plan on getting out to support this activity. If we see some genuine interest, we will continue this effort and endeavor to get more use-friendly dates. It may even be worth taking a half-day vacation to be able to participate.

We will have a Winter Fun Fly in January but the plan this year is to schedule the event a few days ahead of time via email after we have some insight as to what the weather might be.

Looking ahead, we have secured a much larger facility for a Swap Shop in February and will invite all the other local model organizations to participate. We are contemplating a Mall Show at the Galleria in March.

2006 promises to offer model aircraft activities for everyone. I look forward to next year. I hope you will also.

- Bob Magee



**MID-HUDSON RADIO CONTROL SOCIETY  
General Club Meeting Minutes, December 2, 2005**

Gene Terminello (Treasurer) called the meeting to order at 7:35 PM with 46 members in attendance.

**Old Business**

November meeting minutes were sent out via e-mail.

Treasurer's report: submitted & accepted

Field report: (Hopewell) no report.

Membership: Total membership stands at 122 no additions at this time (Bill Winkler)

Flight training: Finished for the year.

Safety report: Everything going well.

Acquiring A New Flying Field: Whitney Philbrick had a meeting with Joel Miller (Assemblyman). Whitney did a presentation of what the club does, example Rhinebeck Jamboree and other activities etc. It was a very positive meeting.

List of 2006 Club Officers (elected via vote by members attending meeting):

| <u>Position</u>    | <u>Nominee</u>            | <u>Directors at Large</u> |              |
|--------------------|---------------------------|---------------------------|--------------|
| President          | Bob Magee                 | 1 Year                    | Norm Coard   |
| Vice President     | Bob Allen                 | 2 Year                    | Dick Kalbfus |
| Treasurer          | Whitney Philbrick         | 3 Year                    | Jim Wood     |
| Safety             | Jerry Rohling             |                           |              |
| Secretary          | Lou Callan                |                           |              |
| Membership         | Mark Monroe               |                           |              |
| News Editor        | Thea Kjellstrom           |                           |              |
| Flight Instruction | Whitney Philbrick         |                           |              |
| Field Directors    | Bob Zuznis, Victor Horton |                           |              |

**Christmas Party**

Date:12/16/05, Time: 7 PM, Place: Umberto's, Rt.9 Poughkeepsie

You cannot pay at the door. Contact Dick Kalbfus (845-221-6671) for tickets no later than 12/7/05.

**Indoor Fun Fly - Time Corrections:**

Sat. 12/17/05 12:00 to 3 PM; Sat. 2/18/06 12:00 to 3 PM

SUNY Ulster College, Stone Ridge, NY.

Contacts: Jim Wood 845-221-9228 and Bernie Liquorman 845-831-1345

Rhinebeck Flying (Fun Fly), November 9: 12 to 14 people flew and it went very well. Great place to fly (Gene Terminello).

Project Night: 4/22/06, Saturday (tentative)

Swap Shop/ Meet: 2/4/06, Saturday (tentative)

50/50 Drawing: Won by Mark Marshall

Holiday Raffle/Auction: Bill Winkler auctioned and drew numbers for many donated items from magazine subscriptions to different types of accessories for electric and glow-powered planes.

Meeting adjourned at 8:20 PM

**After meeting demonstrations:**

Graham Foster gave an explanation of some helicopter equipment. Jim Wood, Bernie Liquorman and Jesse Aronstein gave an explanation and a demonstration of rubber powered planes.

Minutes submitted by Lou Callan.




# FOR SALE

Contact Tom Smith 845-896-9366 for the following items:

- (1) Scratch built Fokker EIII Eindecker. Complete, ready to fly. Great indoor flyer. \$135.00
- (2) Diddle Bug with Cirrus Micro Joul radio, ready to fly, indoors or out. \$150.00
- (3) Demoiselle from Dare kit. Excellent scale indoor flyer. RTF \$125.00
- (4) GWS Douglas DC3, complete, ready to fly park flyer. \$150.00

None of the above comes with a transmitter. All are in excellent shape, and fly very well.

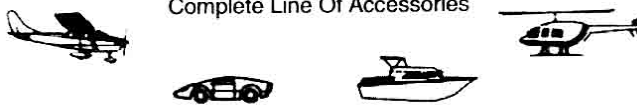


**HOBBY HOUSE**  
 1890 South Rd. (Rt. 9), Poughkeepsie, NY 12601  
 (Across from South Hills Mall)  
 Craig & Loretta (845) 297-3341  
 Hours: Tues. thru Sat. 10-6, Sun. 11-5, closed Mon.

- R/C Cars, Planes & Boats
- Plastic Models
- Paint & Modeling Supplies
- Rockets
- Trains (HO/N/O27)
- Auth. Lionel & MTH Sales/Service

# R/C WORLD

Radio Controlled Hobbies  
 Complete Line Of Accessories



**ROBERT ZUZNIS**  
 (845) 635-1100

Pleasant Valley Shopping Center  
 Rt. 44, Pleasant Valley  
 New York, 12569

## THE FLIGHT LINE

This is a monthly publication of the Mid-Hudson Radio Control Society, an organization established for the promotion of the hobby of radio-controlled model aircraft.

|                           |                   |              |
|---------------------------|-------------------|--------------|
| <b>President</b>          | Bob Magee         | 845-462-0955 |
| <b>Vice President</b>     | Bob Allen         | 845-473-5611 |
| <b>Secretary</b>          | Lou Callan        | 845-496-6038 |
| <b>Treasurer</b>          | Whitney Philbrick | 845-463-0805 |
| <b>Membership</b>         | Mark Monroe       | 845-227-6212 |
| <b>Field Directors</b>    | Bob Zuznis        | 845-221-2603 |
|                           | Victor Horton     | 914-525-7833 |
| <b>Flight Instructor</b>  | Whitney Philbrick | 845-463-0805 |
| <b>Safety Officer</b>     | Jerry Rohling     | 845-297-7827 |
| <b>News Editor</b>        | Thea Kjellstrom   | 914-980-9871 |
| <b>Directors at Large</b> |                   |              |
|                           | 1 Year            | Norm Coard   |
|                           | 2 Year            | Dick Kalbfus |
|                           | 3 Year            | Jim Wood     |

Meetings are held on the first Friday of the month at All Saints Evangelical Lutheran Church on Rt. 82, one mile north of Rt. 55 in LaGrange, NY at 7:30PM.

FLIGHT LINE submissions are accepted as ASCII, RTF or word processing file. Typed or clearly handwritten paper copy is also accepted. Input must be received by the 15<sup>th</sup> of month preceding publication to be included.

Please e-mail input to [MHRCSFlightLine@aol.com](mailto:MHRCSFlightLine@aol.com) or send to Thea Kjellstrom, 81 Montrose Point Rd. Montrose, NY 10548.

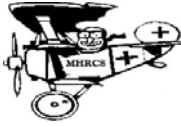
## LETTER FROM THE EDITOR

I hope you all will join me in thanking Mark Monroe as the Flight Line Editor for the past 2 years. Mark's commitment, and the support of his family, has made the newsletter a very valuable source of information and entertainment for us all.

I will do my best to provide a newsletter that will continue to be a valued resource for the club. I will rely heavily upon the continued support of the MHRCS members, contributing articles, pictures and other newsworthy items.

I look forward to a great 2006!

- Thea Kjellstrom



# 2006 MHRCS EVENT CALENDAR

Last Updated December 29, 2005

## JANUARY

- 6 Regular Meeting 7:30 PM
- 14 Winter Fun Fly 10 AM – 2 PM  
Hopewell Field (Weather dependent)  
*See email for specifics*
- 21 Alternate date, Winter Fun Fly
- 24 Board Meeting 7:30 PM

## FEBRUARY

- 3 Regular Meeting 7:30 PM
- 4 Swap Shop 1- 6 PM  
Community Methodist Church  
Rt 376 Poughkeepsie
- 12 NCRCC Auction/Swap Shop  
Vernon, CT
- 21 Board Meeting 7:30 PM
- 24-26 WRAMS Show  
County Center, White Plains

## MARCH

- 3 Regular Meeting 7:30 PM
- 18 Mall show (tentative date)  
Poughkeepsie Galleria
- 28 Board Meeting 7:30 PM

## APRIL

- 7 Regular Meeting 7:30 PM
- 22 Project Night 7 –10 PM  
Community Methodist Church  
Route 376 Poughkeepsie
- 25 Board Meeting 7:30 PM
- 29 Hopewell Field Clean-up 8AM to Noon
- 30 Alternate day, Hopewell Field Clean-up

## MAY

- 3 Start Wednesday AM Breakfast  
EverReady Diner, Hyde Park,  
followed by Flying at Rhinebeck  
Aerodrome (*Alternates every other  
Wednesday with Hopewell*).
- 4 Flight Training starts 5:00 PM
- 5 Regular Club Meeting 7:30 PM
- 23 Board Meeting 7:30 PM

## JUNE

- 2 Regular Club Meeting 7:30 PM
- 10 Father's Day Picnic 10 AM to Dusk  
Hopewell Field
- 27 Board Meeting 7:30 PM

## JULY

- 7 Regular Club Meeting  
Hopewell Field  
Flying at 5PM, Meeting at 7:30 PM
- 25 Board Meeting 7:30 PM

## AUGUST

- 4 Regular Club Meeting  
Hopewell Field  
Flying at 5PM, Meeting at 7:30 PM
- 22 Board Meeting 7:30 PM

## SEPTEMBER

- 1 Regular Club Meeting 7:30 PM
- 8 –10 Rhinebeck Jamboree
- 15-17 NEAT Fair
- 26 Board Meeting 7:30 PM

## OCTOBER

- 4 Regular Meeting 7:30 PM
- 24 Board Meeting 7:30 PM

## NOVEMBER

- 3 Regular Meeting 7:30 PM
- 21 Board Meeting 7:30 PM

## DECEMBER

- 1 Regular Meeting 7:30 PM
- 7 Holiday Party (tentative date)
- 12 Board Meeting 7:30 PM



**2006 Membership Application  
MID-HUDSON RADIO CONTROL SOCIETY**

NEW: \_\_\_\_\_ RENEWAL: \_\_\_\_\_

Name: \_\_\_\_\_ E Mail Address: \_\_\_\_\_

Address: \_\_\_\_\_

City \_\_\_\_\_ State \_\_\_\_\_ Zip \_\_\_\_\_ County \_\_\_\_\_

Home Phone: \_\_\_\_\_ AMA # \_\_\_\_\_ DOB \_\_\_\_\_

Radio Channels Utilized: \_\_\_\_\_

Signed Off: Airplane \_\_\_ Sailplane \_\_\_ Helicopter \_\_\_ Not Signed off \_\_\_

Areas of Interest: Sport \_\_\_\_\_ Scale \_\_\_\_\_ Soaring \_\_\_\_\_ Electric \_\_\_\_\_ Helicopter \_\_\_\_\_

---

Regular Member: \$100.00 those 19 or over by July 1<sup>st</sup> \$ \_\_\_\_\_

Regular Spouse Member: \$ 25.00 (no initiation fee) \$ \_\_\_\_\_

Regular Youth Member: \$ 5.00 those 19 or under as of July 1<sup>st</sup> \$ \_\_\_\_\_

Life Member: \$0.00

Late Fee Assessment: \$15.00 if paid between January meeting and January 20. \$ \_\_\_\_\_

Please note, that any member failing to meet the January 20 late registration deadline, will be required to pay an initiation fee as a rejoining member.

Initiation Fee for new or rejoining members: \$25.00 if over 19 by July 1st \$ \_\_\_\_\_

\$0.00 if under 19 by July 1st

**Total Annual Dues** (payable by January meeting without penalty) \$ \_\_\_\_\_

TOTAL COLLECTED: CASH \$      CHECK #      MONEY ORDER #

**I hereby attest that I have received a current copy of the MHRCS By-Laws and Field Rules.**

**I agree to read and abide by these documents to the fullest.**

Signed \_\_\_\_\_ Date \_\_\_\_\_

Note: New and renewed membership dues should be paid in person to the Membership Director at a regular club meeting. A copy of your 2006 A.M.A. membership card must be provided to the membership Director for club records. If application is mailed you **must include a copy of your 2006 A.M.A membership card and a self-addressed stamped envelope.**

Return to: Mark Monroe (Membership Director) 45 Fox Road Hopewell Jct., NY 12533